

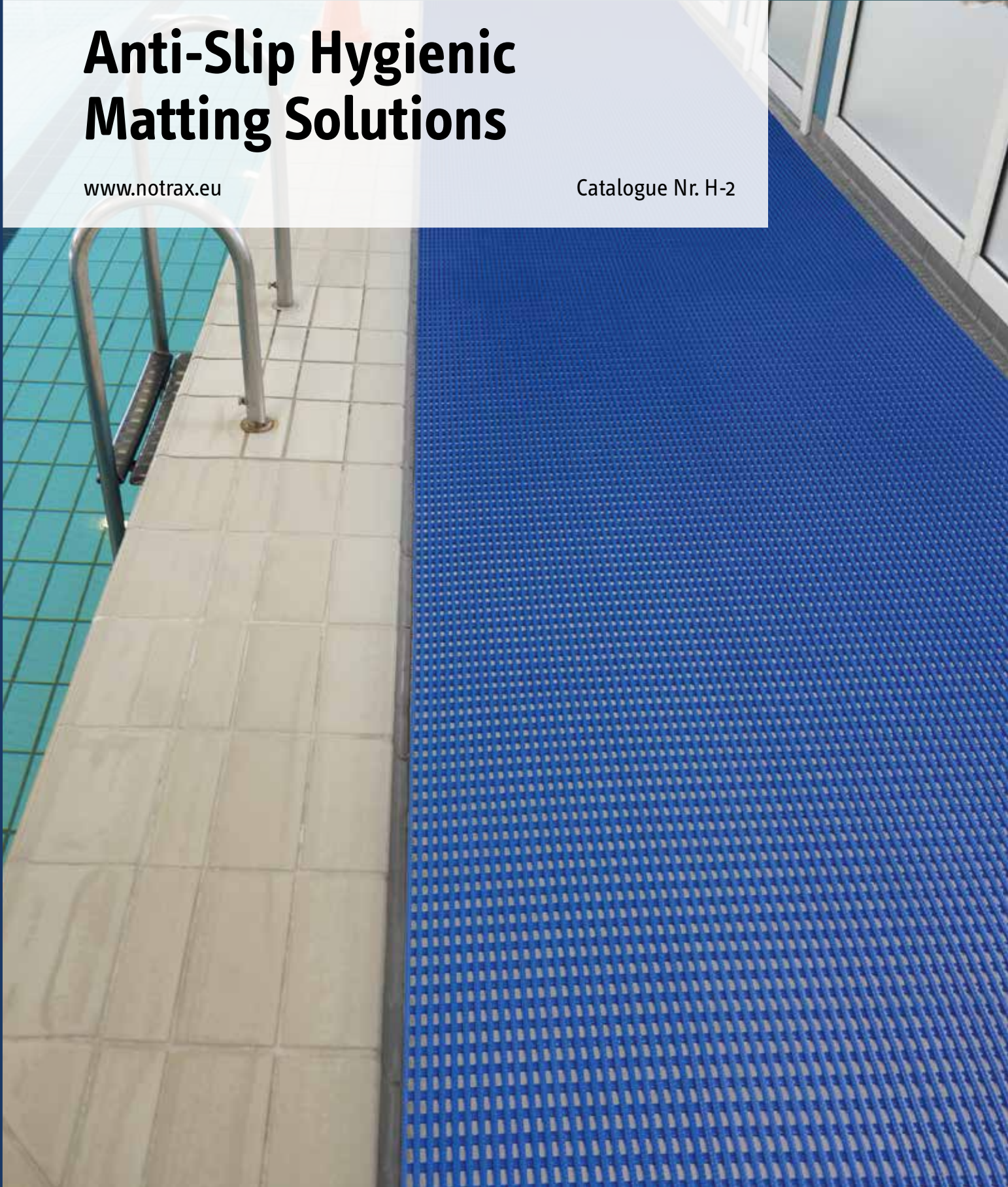


MATS FOR PROFESSIONAL USE

Anti-Slip Hygienic Matting Solutions

www.notrax.eu

Catalogue Nr. H-2



Index and Guide

Notrax® Matting Pictograms	3
Notrax® Product Testing	3
Benefits of Hygienic Anti-Slip Matting	4/5

Art.	Product	Page
523	Modular Lok-Tyle™	5
536	Akwadek™	6/7
538	Gripwalker Lite™	6/7
535	Soft-Step™	6/7

Notrax® Matting Testing & Pictograms

All Notrax® Floor Matting Products are subject to rigorous testing by independent laboratories prior to their introduction to the market. Our Product Testing Charts show the following relative comparisons between the Notrax® mats featured in each category of this brochure:

Example Product Testing Chart

PRODUCT TESTING



Wear resistance

Indicates the time it takes for a mat to lose its functionality. This is an accelerated wear test where the results are expressed in total weight loss of material when subjected to 5000 cycles under an abrasion wheel. The higher the pointer in the test chart, the greater its resistance to wear.

Slip resistance

Indicates the slip resistance of a mat. This test measures the force required to cause slippage of a load across the surface material. The coefficient is the ratio of force required divided by the weight. The higher the pointer in the test chart, the greater the coefficient of friction ratio, thus the better the slip resistance of a mat.

Anti-fatigue

Indicates the degree of comfort a mat provides. This test starts by measuring the original thickness of a mat. Then compression is applied and the thickness under this load is measured again. The difference between the two measurements is called deflection. The higher the pointer in the test chart, the better its anti-fatigue properties.



Heavy Duty
Recommended for heavy duty use in industrial environments.



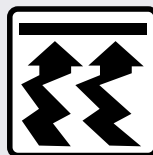
Anti-Slip
Matting designed to provide added traction through aggressive surface patterns and textures.



Barefoot
Pleasantly soft and warm under bare feet.



Medium Duty
Recommended for medium duty use in industrial environments.



Insulation
Against cold, heat, vibrations and noise. Matting elevates standing workers from cold/wet floors, which keeps their feet warmer thereby improving overall perception of wellbeing.



MicroStop™
Antibacterial treatment inhibits the growth of microorganisms such as bacteria and fungi that can cause odour, stains, and product deterioration.



Light Duty
Recommended for light duty use in industrial environments.



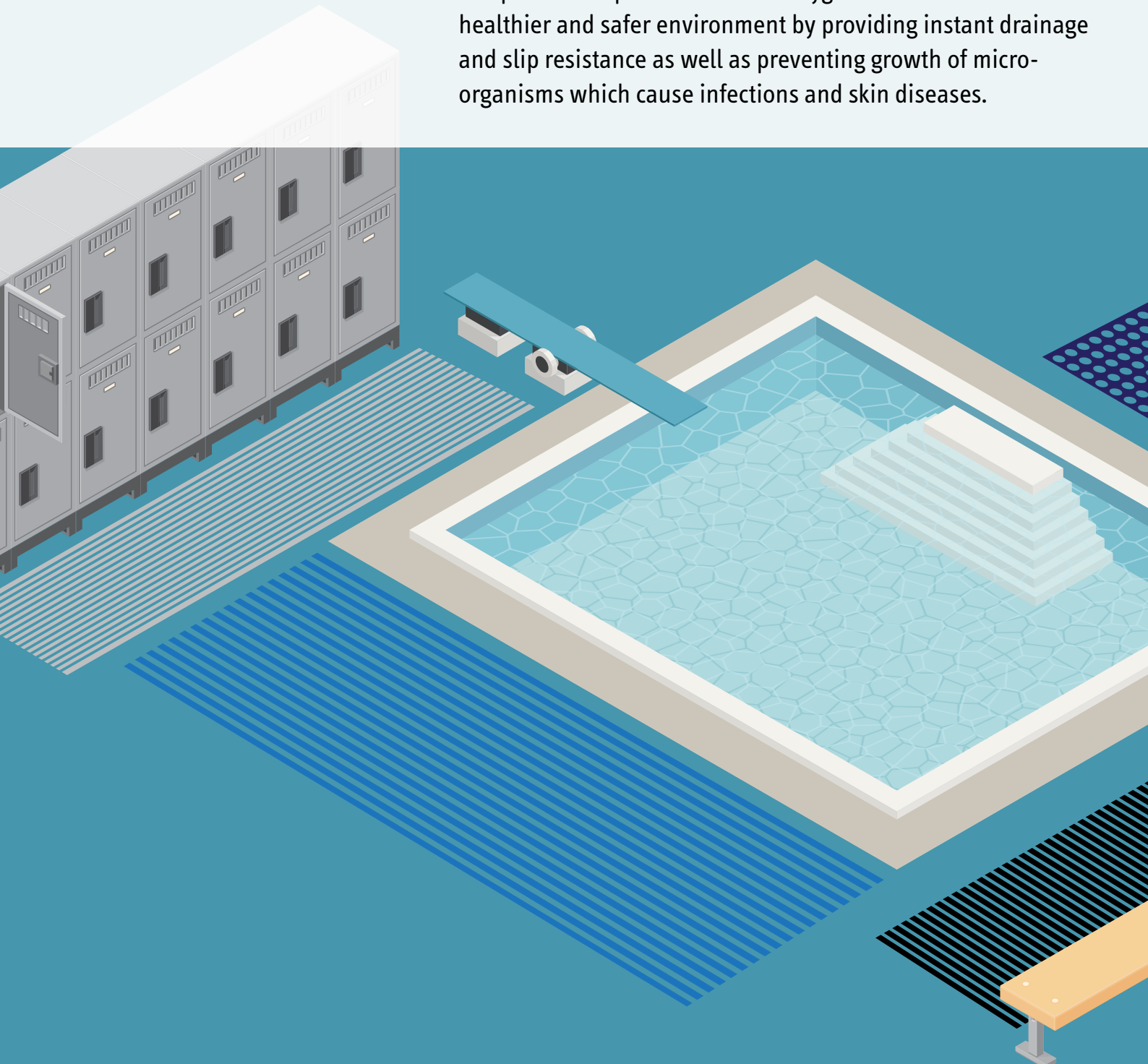
Drainage
Open construction matting allows for liquids and debris to pass through, providing secure footing in a wet environment.



Cleaning
Suitable for cleaning with high pressure (hot) water jet.

Anti-Slip Hygienic Matting Solutions

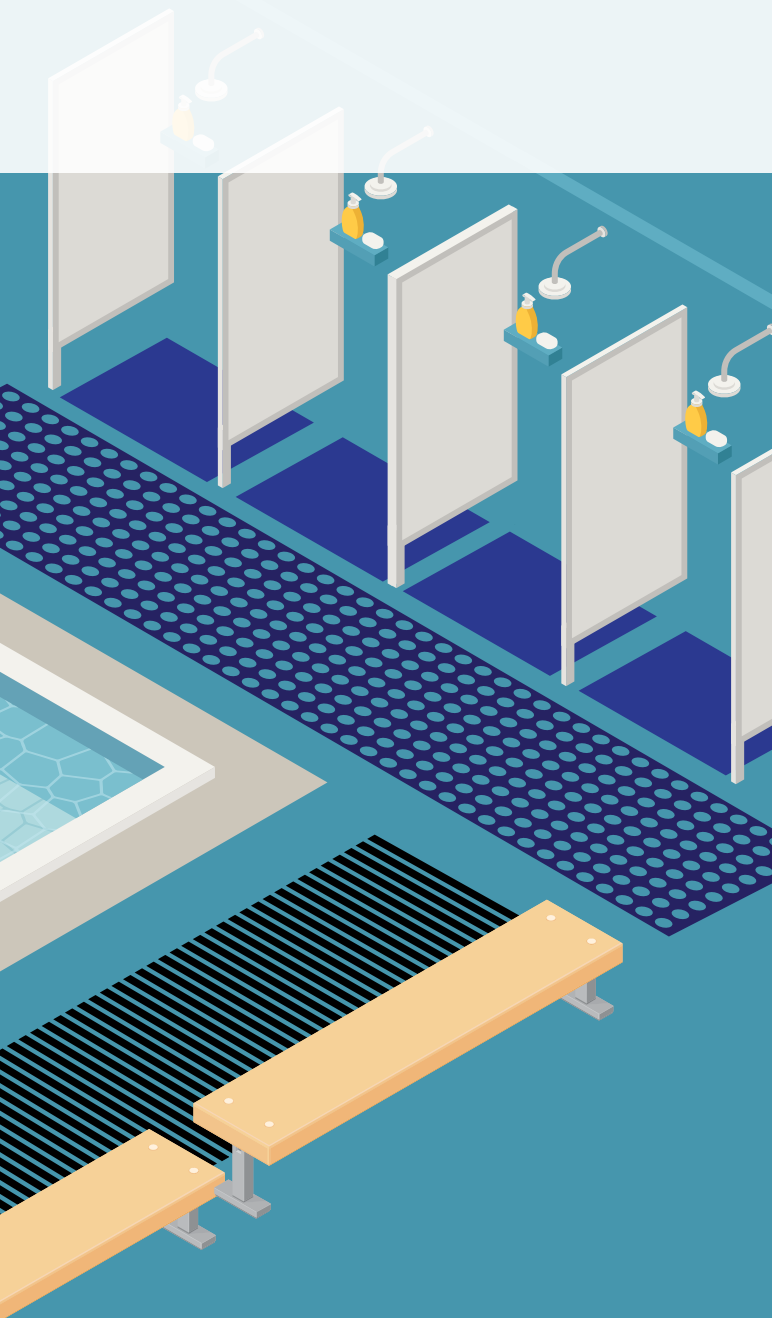
One of the most common causes of swimming pool accidents is slips and falls. In and around locker rooms, swimming pools and showers are a slip hazard with wet, slippery and cold floors. Plus the use of shampoos, soaps and oils often compound this problem. Notrax® hygienic mats create a healthier and safer environment by providing instant drainage and slip resistance as well as preventing growth of micro-organisms which cause infections and skin diseases.



Hygienic matting is treated with an anti-microbial to prevent growth of bacteria, fungi and other micro-organisms that cause odours, rashes, athlete's foot and other skin infections. The mat is designed to be comfortable and warm for bare feet, isolating users from the cold and often wet floors, while also offering grip for slip prevention.

Hygienic anti-slip matting has an open grid allows for easy drainage of water while the raised structure provides aeration for easy drying and prevents the mat from floating.

Notrax® matting is available on rolls or interconnecting tiles that can easily be laid, installed or customized for walkways, changing room floors, showers and saunas, and along swimming pools to prevent slipping.



523 Modular Lok Tyle™

Warm, comfortable, non-porous and easy to clean, made from strong flexible PVC. Open structure of wide holes that provide free and easy draining for water, soap, shampoo and lotions where dependable sure footing is essential. Modular easy click together tiles, ideal for on-site for custom configurations.

- Medium duty UV resistant antibacterial PVC modular tiles
- Overall thickness: 14,3 mm
- Weight: 5,2 kg per m²

Colours:

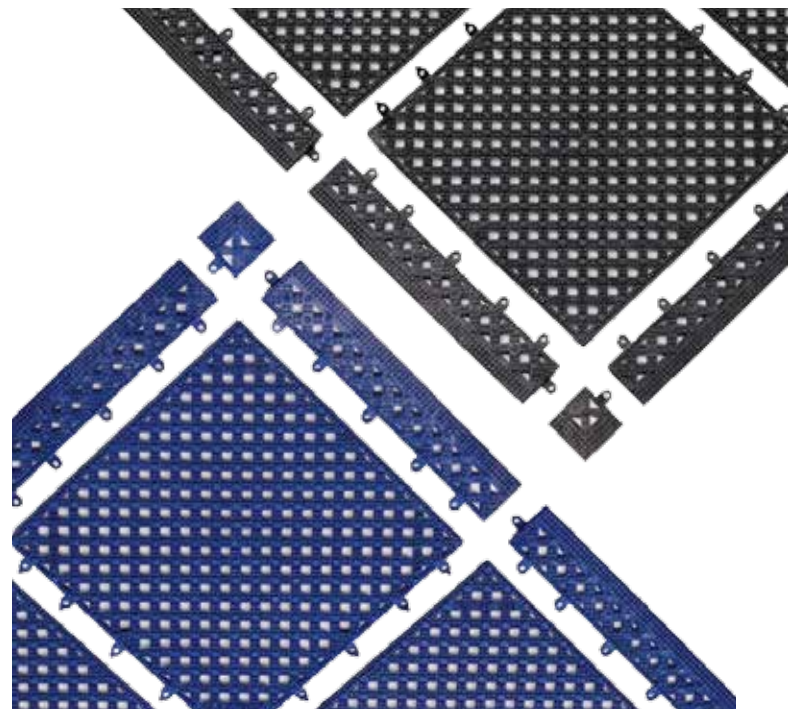
- Blue, Black

Sizes:

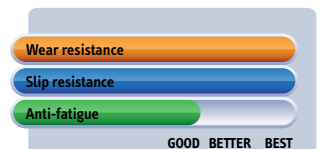
- Tile: 30,5 cm x 30,5 cm

Accessories:

- Bevelled ramps and corners complete the installation and minimize trip hazards
- Ramp: 5 cm x 30,5 cm
- Corner: 5 cm x 5 cm



PRODUCT TESTING



Wet Areas - Hygienic Mats

Soft and Warm for Happy Feet

Durable hygienic matting creates a healthier and safer environment in wet areas such as shower facilities. The grip design creates a slip-resistant yet comfortable walking surface for bare feet. Anti-microbial treated materials prevents growth of fungi or bacteria. Open structure for easy drainage. Easy to clean and requires only minimal maintenance.

Recommended uses:

- Shower rooms, locker rooms, changing rooms, wardrobes, swimming pools, saunas, etc.



536 Akwadek™

- Heavy duty UV resistant antibacterial PVC grid matting
- Overall thickness: 12 mm
- Weight: 7.5 kg per m²
- Free of DOP, free of DMF, free of ozone depleting substances, free of silicone and free of heavy metals

Colours:

- Blue, Grey

Custom lengths:

- 60 cm, 91 cm and 122 cm widths per linear meter

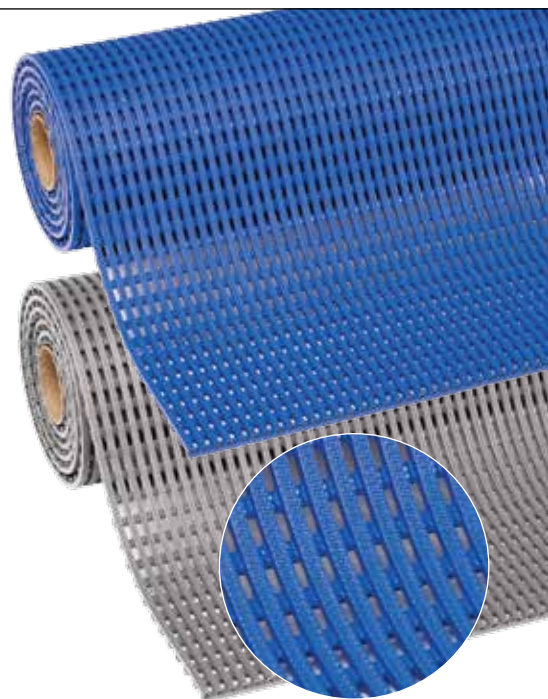
Full rolls 10 m:

- 60 cm, 91 cm and 122 cm wide

Accessories:

- Black connector clips available for widthwise/lengthwise expansion
- 90-degree connections

PRODUCT TESTING



538 Gripwalker Lite™

- Light duty UV resistant antibacterial PVC wave matting
- Overall thickness: 5,3 mm
- Weight: 3.6 kg per m²
- Free of DOP, free of DMF, free of ozone depleting substances, free of silicone and free of heavy metals

Colours:

- Blue, Grey

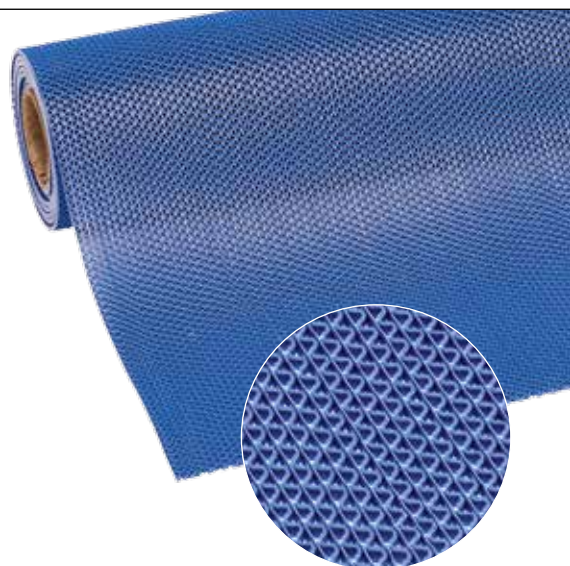
Full rolls 12,2 m:

- 91 cm and 122 cm wide

Custom lengths:

- 91 cm and 122 cm widths per linear meter

PRODUCT TESTING



535 Soft-Step™

- Light duty UV resistant antibacterial polyethylene wave matting
- Overall thickness: 9 mm
- Weight: 4.3 kg per m²

Colours:

- White-Dotted, Beige, Blue

Custom lengths:

- 60 cm widths per linear meter

Full rolls 15 m:

- 60 cm wide x 15 m

Accessories:

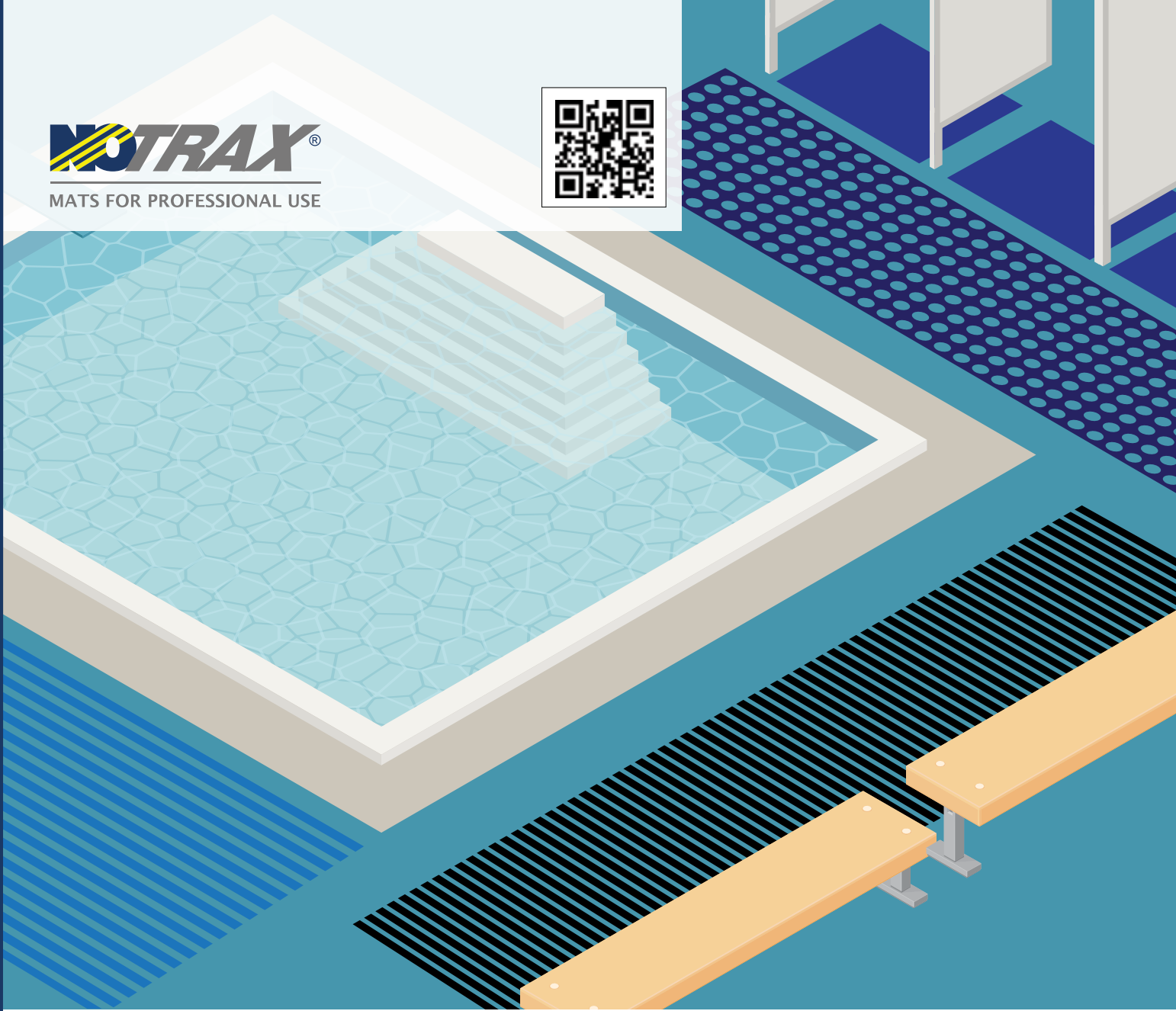
- Connector clips available for widthwise expansion

PRODUCT TESTING



From dry to wet conditions, light to heavy duty, use this catalogue to choose the right Notrax® mat for the right application. It will contribute to increased productivity, employee satisfaction and fewer injuries.

NOTRAX®
MATS FOR PROFESSIONAL USE



www.justrite.com

Notrax® is part of Justrite Safety Group. Since 1906, customers have trusted Justrite for innovative solutions to help protect workers and the environment, reduce fire risks, and improve productivity. Tested for unsurpassed quality and compliance to applicable codes and regulations, Justrite products are available worldwide.